

Royal Preston Hospital Emergency Department

Monthly Bulletin: October 2011 to September 2012

This bulletin provides a breakdown of all injury attendances at Royal Preston Hospital Emergency Department (ED) between October 2011 and September 2012.

Between October 2011 and September 2012 there were 30,346 attendances to Royal Preston Hospital ED. The month with the highest attendances was March with 2,792 (**Figure 1**). There were more male than female attendances presenting at Royal Preston Hospital ED (males=16,702; 55%).

Figure 2 illustrates age group of ED attendances for each month. For all injuries the highest proportions of attendances were for persons aged 30-59 (n=8,959; 30%) and 15-29 (n=8,739; 29%) years old.

Table 1 details the injury group of ED attendances. In almost two-fifths (39%) of attendances, injury group was recorded as fall. Other injury accounted for 37% of attendances, sports injury 9%, road traffic collisions (RTC) 9% and assaults 5%.

Table 2 illustrates the location of incident for patients attending the Royal Preston Hospital ED. The primary locations of injury were home (33%) and public place (27%). The discharge destination for injury attendances is displayed in **Table 3**. It indicates that almost half (48%) of attendances were discharged with no follow-up treatment. Nearly a

fifth (19%) of attendances were discharged into the care of their GP and 11% went to the fracture clinic.

Assault attendances

Between October 2011 and September 2012 there were 1,546 assault attendances to Royal Preston Hospital ED. The month with the highest attendance was October with 156 attendances (**Figure 3**). There were more male than female assault attendances presenting at Royal Preston Hospital ED (males=1,126; 73%).

Table 4 details the age group of assault attendances for each month. The majority of ED assault attendances were aged 15-29, (n=908; 59%) and over a third (34%) were aged 30-59 (n=529) years.

Table 5 illustrates the incident location for assault attendances to Royal Preston Hospital ED. The primary incident locations for assault attendances were in a public place (50%), followed by other (15%) and home (15%).

The discharge destination for assault attendances is displayed in **Table 6**. It indicates that over four in ten (43%) of assault attendances were discharged with no follow-up treatment. Over a third (36%) of assault attendances required follow-up treatment and 8% were admitted to hospital.

Figure 1: Gender of ED injury attendances by month, October 2011 to September 2012

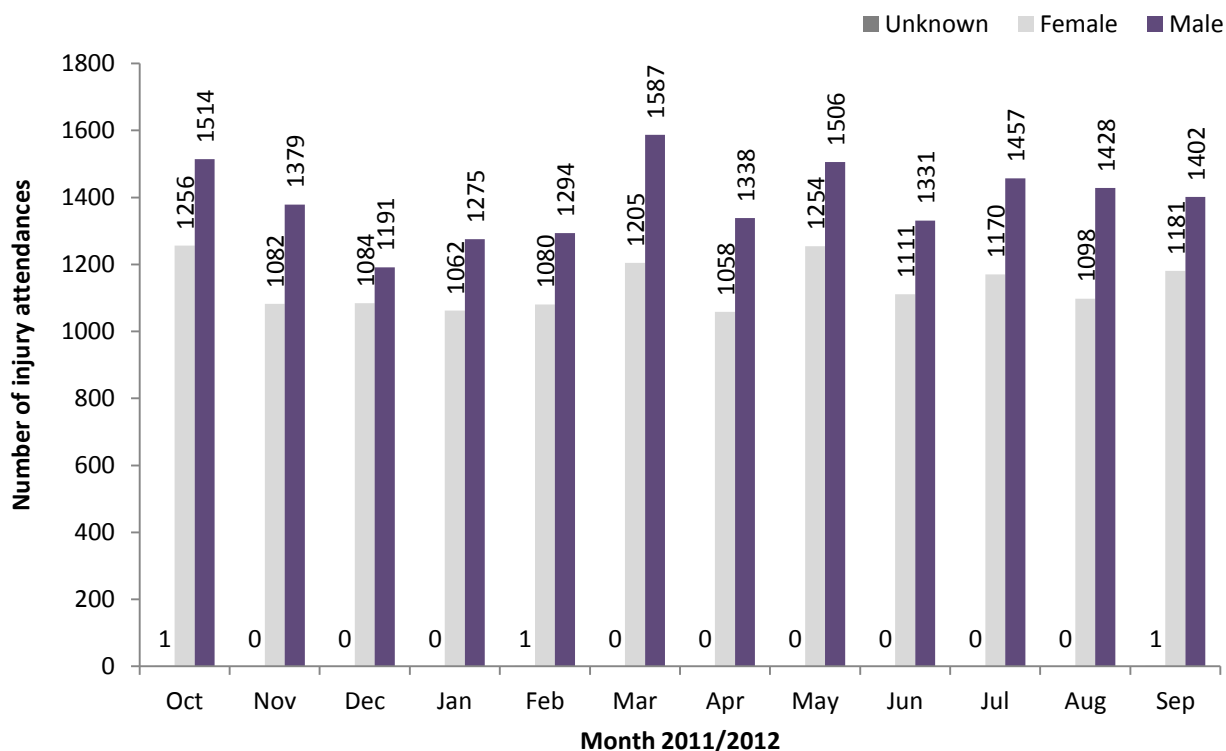


Figure 2: Percentage of ED injury attendances by age group and month, October 2011 to September 2012

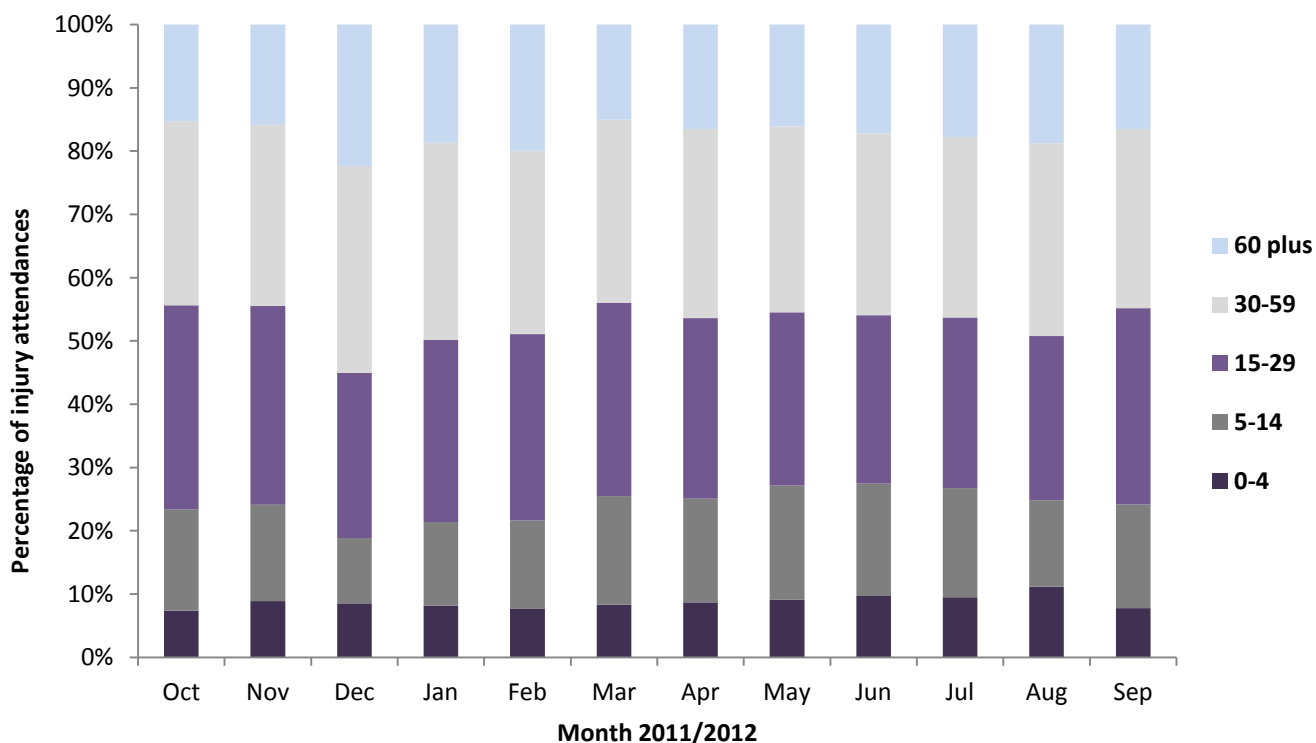


Table 1: ED injury attendances by injury group and month, October 2011 to September 2012

Injury group	Oct	Nov	Dec	Jan	Feb	Mar	Apr	May	Jun	Jul	Aug	Sep	Total	%
Fall	1031	854	1038	940	1066	997	856	1056	991	1004	1002	1073	11908	39
Other injury	934	867	743	812	722	1082	925	1115	939	1066	1031	853	11089	37
Sports injury	325	298	124	196	230	337	276	274	179	214	130	279	2862	9
RTC	295	295	226	249	206	233	209	170	182	211	222	215	2713	9
Assault	156	135	119	122	126	115	118	135	133	110	125	152	1546	5
Deliberate self-harm	30	12	25	18	25	28	12	10	18	22	16	12	228	1
Total	2771	2461	2275	2337	2375	2792	2396	2760	2442	2627	2526	2584	30346	100

Table 2: ED injury attendances by incident location and month, October 2011 to September 2012^{1,2,3}

Location	Oct	Nov	Dec	Jan	Feb	Mar	Apr	May	Jun	Jul	Aug	Sep	Total	%
Home	812	771	852	814	825	855	815	881	849	869	854	787	9984	33
Public place	876	775	613	570	601	660	598	682	606	672	700	694	8047	27
Sport	271	254	122	176	206	311	269	251	179	230	137	249	2655	9
Work	239	196	171	223	195	242	200	248	209	246	250	229	2648	9
Other	214	135	196	197	222	237	229	211	197	194	260	217	2509	8
Educational establishment	178	190	81	155	148	223	77	175	112	120	***	139	1602	5
Other persons home	65	56	89	64	48	66	83	77	62	57	63	54	784	3
Garden	23	19	18	15	24	51	41	98	74	69	87	31	550	2
Public building	21	5	90	75	44	47	20	15	29	44	47	74	511	2
Holiday	32	15	10	13	21	19	29	31	52	45	54	46	367	1
Public park/playground	18	10	5	6	16	30	15	51	44	40	43	31	309	1
Nursery	12	15	7	8	15	18	8	13	11	12	16	9	144	0
Hospital	***	10	11	***	***	15	***	11	8	10	6	9	94	0
Prison	***	7	***	5	***	9	***	9	6	9	***	8	70	0
Special event	***	***	5	7	***	***	***	7	***	8	***	***	41	0
Public transport	***	***	***	5	***	7	***	***	***	***	***	***	<28	0
Bus station	***	***	***	***	***	***	***	***	***	***	***	***	***	0
Total	2771	2461	2275	2337	2375	2792	2396	2760	2442	2627	2526	2584	30346	100

Table 3: ED injury attendances by discharge destination and month, October 2011 to September 2012^{4,5}

Discharge destination	Oct	Nov	Dec	Jan	Feb	Mar	Apr	May	Jun	Jul	Aug	Sep	Total	%
Discharged - no follow-up	1459	1225	1049	1130	1145	1373	1163	1304	1150	1155	1168	1340	14661	48
Discharged - follow-up by GP	387	395	415	410	455	529	487	600	544	672	534	437	5865	19
Fracture clinic	297	275	254	241	230	295	265	297	276	263	257	282	3232	11
Admitted RPH	222	224	225	204	210	185	206	228	177	214	240	231	2566	8
Other	105	104	74	98	73	108	75	71	55	101	67	57	988	3
Left before being treated	79	55	71	60	97	97	62	85	86	53	88	57	890	3
ED clinic	83	74	71	77	71	74	50	74	35	65	62	67	803	3
Outpatient clinic	83	59	66	64	41	74	52	67	68	51	75	64	764	3
Other healthcare professional	37	30	28	35	28	38	23	20	34	34	28	36	371	1
Transferred to other HCP	6	9	11	8	10	9	7	***	5	8	***	6	86	0
Left having refused treatment	9	9	5	8	9	7	***	8	8	7	***	***	78	0
Police custody	***	***	<7	***	***	***	***	***	***	***	***	5	35	0
Admitted CDGH	***	***	***	***	***	***	***	***	***	***	***	***	7	0
Total	2771	2461	2275	2337	2375	2792	2396	2760	2442	2627	2526	2584	30346	100

Assaults

Table 4: ED assault attendances by age group and month, October 2011 to September 2012

Age group	Oct	Nov	Dec	Jan	Feb	Mar	Apr	May	Jun	Jul	Aug	Sep	Total	%
0-4	***	***	***	***	***	***	***	***	***	***	***	***	12	1
5-14	7	5	***	6	***	6	6	12	7	***	5	7	71	5
15-29	100	78	77	64	71	62	60	72	83	69	70	102	908	59
30-59	46	51	35	49	50	44	49	48	39	35	44	39	529	34
60 plus	***	***	***	***	***	***	***	***	***	***	***	***	26	2
Total	156	135	119	122	126	115	118	135	133	110	125	152	1546	100

¹ Educational establishment includes: educational establishment; school other; school; school playground; and school sport. 'Public place' includes public place and playing out.

² Please note that all numbers less than five have been suppressed (with ***) in line with patient confidentiality and if there is only one number less than five in a category then two numbers will be suppressed to prevent back calculations from totals.

³ Please note percentages might not add to one hundred due to rounding.

⁴ Admitted to RPH includes: admitted to Royal Preston Hospital (RPH); and, admitted to the Avondale Unit. Other includes: primary care; other; dead on arrival; sea and waterway; and died in department. HCP=Health care provider and GP=general practitioner.

⁵ 'Admitted to CDGH' includes: admitted; admitted to Chorley and South Ribble Hospital (CDGH); admitted to Healey/Yarrow Ward.

Figure 3: Number of ED assault attendances by gender and month, October 2011 to September 2012

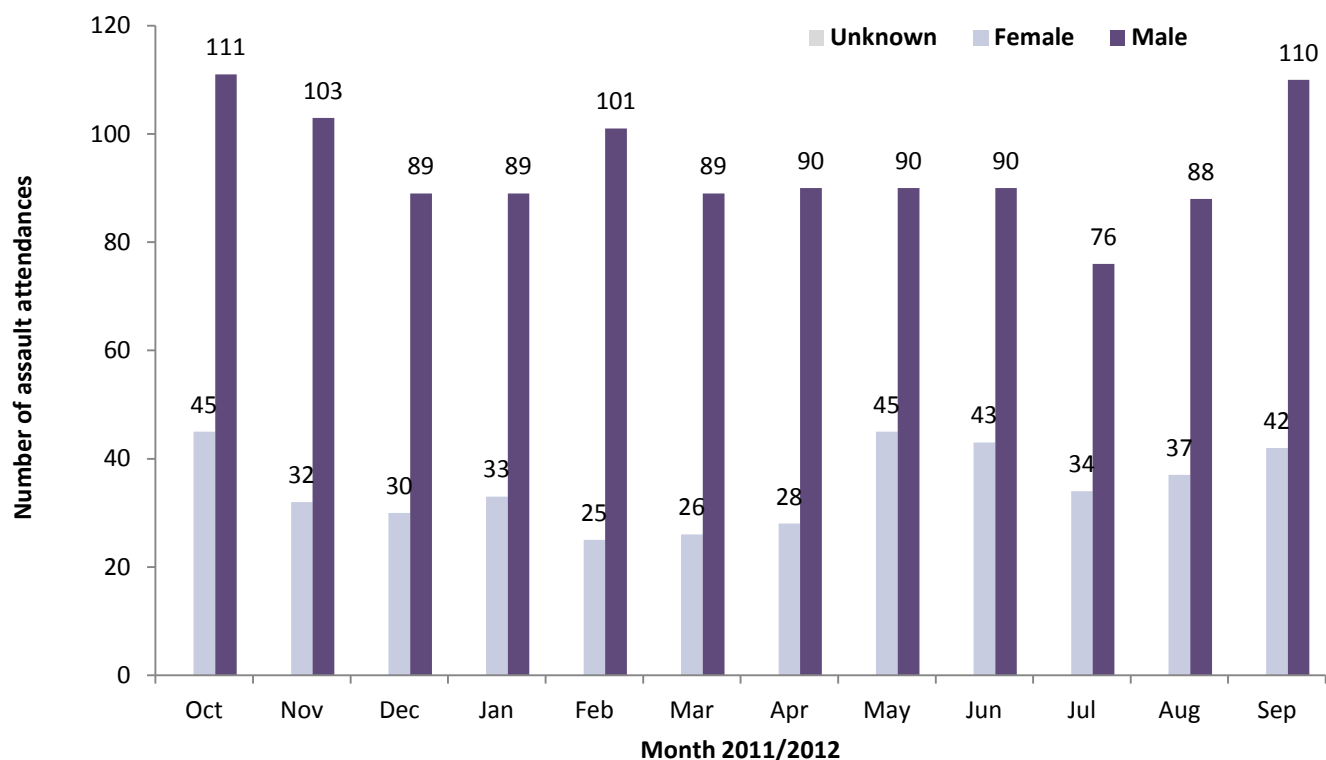


Table 5: ED assault attendances by incident location and month, October 2011 to September 2012

Location	Oct	Nov	Dec	Jan	Feb	Mar	Apr	May	Jun	Jul	Aug	Sep	Total	%
Public place	110	92	56	53	60	53	62	69	56	45	53	58	767	50
Other	14	6	23	13	20	13	21	22	36	22	19	26	235	15
Home	17	18	18	26	19	18	19	21	24	10	24	20	234	15
Public building	***	***	10	16	12	13	***	***	***	21	15	21	116	8
Work	6	6	5	***	5	6	5	11	8	***	6	5	69	4
Other persons home	***	***	***	***	6	***	5	***	***	***	6	10	50	3
Educational establishment	***	6	***	***	***	***	***	***	***	***	***	5	28	2
Prison	***	***	***	***	***	5	***	***	***	***	***	***	18	1
Public park/playground	***	***	***	***	***	***	***	***	***	***	***	***	10	1
Holiday	***	***	***	***	***	***	***	***	***	***	***	***	6	0
Bus station	***	***	***	***	***	***	***	***	***	***	***	***	***	0
Garden	***	***	***	***	***	***	***	***	***	***	***	***	***	0
Hospital	***	***	***	***	***	***	***	***	***	***	***	***	***	0
Nursery	***	***	***	***	***	***	***	***	***	***	***	***	***	0
Special event	***	***	***	***	***	***	***	***	***	***	***	***	***	0
Sport	***	***	***	***	***	***	***	***	***	***	***	***	***	0
Total	156	135	119	122	126	115	118	135	133	110	125	152	1546	100

Table 6: ED assault attendances by discharge destination and month, October 2011 to September 2012

Discharge destination	Oct	Nov	Dec	Jan	Feb	Mar	Apr	May	Jun	Jul	Aug	Sep	Total	%
Discharged	68	62	51	46	62	53	48	54	59	38	49	80	670	43
Follow-up	52	48	44	50	38	36	44	59	51	45	46	47	560	36
Other	20	16	11	12	19	17	16	16	16	19	15	11	188	12
Admitted	16	9	13	14	7	9	10	6	7	8	15	14	128	8
Total	156	135	119	122	126	115	118	135	133	110	125	152	1546	100

Published January 2013

Johnathan Rooney (TIIG Officer), Val Upton (Senior Public Health Researcher / Analyst)

Centre for Public Health, Liverpool John Moores University, 2nd Floor, Henry Cotton Campus, Liverpool, L3 2ET

Tel: 0151 231 4539 Email: j.rooney@ljmu.ac.uk

Website: www.tiig.info (please note data requests should be made through the website)